

Type RA55 / RA66 – automated, gasket TF4215



3-pcs. ball valve with pneumatic actuator "Air Torque - C"

Actuators / brackets to build on mounting flange in accordance with DIN ISO 5211
functioning unit of ball valve, bracket and adapter, fully assembled and function tested

Actuator pneumatic in accordance with DIN EN 15714-3

designed for 6 bar control pressure

single / double acting, 0° ... 90°; on request 180°

Body ALODUR, running surfaces smooth anodised, stainless steel on request

Piston mechanically processed, anodized, operating range -15 °C ... +150 °C

With multi-functional position indicator prepared for the addition.

Square-position diagonal or parallel possible.

Hardly any wear and optimal running properties by involute gearing.

	Butt weld ends in accordance with DIN 11850 - R1 / R2
	Female thread in acc. with DIN EN ISO 228-1 (DIN 259) / DIN 2999
	NPT-Female thread in accordance with ANSI B2.1
	Flanges in acc. with DIN EN 1092-1 PN16; PN40 on request

Order code

KH- RA _ _ - H _ _ CB _ _ _

Steel: 55
Stainless s.: 66
Gasket TF4215: H
N. diameter DN: _ _ _

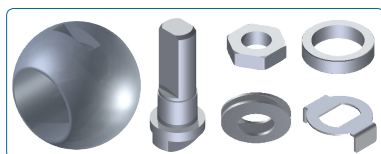
Bore reduced: R
Bore full: V

Butt weld ends: CBS
DIN-Female thread: CBG
NPT-Female thread: CBB
Flanges: CBF
single acting: SC
double acting: DR

full Bore	ISO-Threaded ends / NPT-Threaded ends / Butt weld ends / Flange - Gasket TF4215			
	Ball valve steel type RA55		Ball valve stainless steel type RA66	
	Actuator pneumatic		Actuator pneumatic	
N. diameter DN	single acting	double acting	single acting	double acting
008	KH-RA55-H008VCB_SC	KH-RA55-H008VCB_DR	KH-RA66-H008VCB_SC	KH-RA66-H008VCB_DR
010	KH-RA55-H010VCB_SC	KH-RA55-H010VCB_DR	KH-RA66-H010VCB_SC	KH-RA66-H010VCB_DR
015	KH-RA55-H015VCB_SC	KH-RA55-H015VCB_DR	KH-RA66-H015VCB_SC	KH-RA66-H015VCB_DR
020	KH-RA55-H020VCB_SC	KH-RA55-H020VCB_DR	KH-RA66-H020VCB_SC	KH-RA66-H020VCB_DR
025	KH-RA55-H025VCB_SC	KH-RA55-H025VCB_DR	KH-RA66-H025VCB_SC	KH-RA66-H025VCB_DR
032	KH-RA55-H032VCB_SC	KH-RA55-H032VCB_DR	KH-RA66-H032VCB_SC	KH-RA66-H032VCB_DR
040	KH-RA55-H040VCB_SC	KH-RA55-H040VCB_DR	KH-RA66-H040VCB_SC	KH-RA66-H040VCB_DR
050	KH-RA55-H050VCB_SC	KH-RA55-H050VCB_DR	KH-RA66-H050VCB_SC	KH-RA66-H050VCB_DR

reduced Bore	ISO-Threaded ends / NPT-Threaded ends / Butt weld ends / Flange - Gasket TF4215			
	Ball valve steel type RA55		Ball valve stainless steel type RA66	
	Actuator pneumatic		Actuator pneumatic	
N. diameter DN	single acting	double acting	single acting	double acting
015	KH-RA55-H015RCB_SC	KH-RA55-H015RCB_DR	KH-RA66-H015RCB_SC	KH-RA66-H015RCB_DR
020	KH-RA55-H020RCB_SC	KH-RA55-H020RCB_DR	KH-RA66-H020RCB_SC	KH-RA66-H020RCB_DR
025	KH-RA55-H025RCB_SC	KH-RA55-H025RCB_DR	KH-RA66-H025RCB_SC	KH-RA66-H025RCB_DR
032	KH-RA55-H032RCB_SC	KH-RA55-H032RCB_DR	KH-RA66-H032RCB_SC	KH-RA66-H032RCB_DR
040	KH-RA55-H040RCB_SC	KH-RA55-H040RCB_DR	KH-RA66-H040RCB_SC	KH-RA66-H040RCB_DR
050	KH-RA55-H050RCB_SC	KH-RA55-H050RCB_DR	KH-RA66-H050RCB_SC	KH-RA66-H050RCB_DR
065	KH-RA55-H065RCB_SC	KH-RA55-H065RCB_DR	KH-RA66-H065RCB_SC	KH-RA66-H065RCB_DR

Accessories / spare parts



Metall-spare parts for 3-pcs. ball valve R / RA

Accessories / spare parts made of metall for 3-pcs. ball valves

Stainless steel ball available on request with degassing bore.

Order code

KH-MFZ- _ _ _ _

N. diameter DN: _ _ _

Bore reduced: R
Bore full: V

Ball: KUG
Stem: SWE
Stem nut: SWM
disk spring: TFD
retaining ring: APR
Fix disk: FSS

N. diameter DN		Ball	Stem	Stem-nut	disk spring (Set)	retaining ring	fix disk
Bore		Stainless steel	Stainless steel	Stainless steel			
full	reduced						
008	-	... KUG	... SWE	... SWM	... TFD	... APR	... FSS
010	015	... KUG	... SWE	... SWM	... TFD	... APR	... FSS
015	020	... KUG	... SWE	... SWM	... TFD	... APR	... FSS
020	025	... KUG	... SWE	... SWM	... TFD	... APR	... FSS
025	032	... KUG	... SWE	... SWM	... TFD	... APR	... FSS
032	040	... KUG	... SWE	... SWM	... TFD	... APR	... FSS
040	050	... KUG	... SWE	... SWM	... TFD	... APR	... FSS
050	065	... KUG	... SWE	... SWM	... TFD	... APR	... FSS
065	080	... KUG	... SWE	... SWM	... TFD	... APR	... FSS
080	100	... KUG	... SWE	... SWM	... TFD	... APR	... FSS
100	125	... KUG	... SWE	... SWM	... TFD	... APR	... FSS
-	150	... KUG	... SWE	... SWM	... TFD	... APR	... FSS
150	200	... KUG	... SWE	... SWM	... TFD	... APR	... FSS